



# RV Emerald Plus™ 6500 GenSet



## RV GenSet

- Can Run Two A/Cs with Power to Spare
- Capped Voltage Regulator for Stability as Appliance Load Changes
- Electronic Ignition for Reduced Maintenance and Dependable Cold Weather Starting
- Gasoline or LP Fueled
- 3-Year Limited Warranty

## Ratings and Models

Model	Fuel	Hz	RPM	Watts	Voltage	Amps	Ph	Circuit Breaker
<u>Conventional Compartment Model</u>								
6.5NHE-FA/26100	Gasoline	60	1800	6500	120	54.2	1	(1) 30A, (1) 20A HACR
6.3NHE-FA/11500	LP Vapor	60	1800	6300	120	52.4	1	(1) 30A, (1) 20A HACR
6.3 NHE-FA/26110	LP Liquid	60	1800	6300	120	52.4	1	(1) 30A, (1) 20A HACR
5NHE-FN/29236	Gasoline	50	1500	5000	Reconnectible*		1	(2) 20A
5NHE-FA/11442	LP Vapor	50	1500	5000	Reconnectible*		1	(2) 20A
5NHE-FN/31813	LP Liquid	50	1500	5000	Reconnectible*		1	(2) 20A

Ratings apply to altitudes up to 500 feet (152.4 m), 85° F 29.4° C

Derating: Power output will decrease 3.5% for each 1,000 feet (305 m) above sea level and 1% for each 10° F 5.5° C increase in ambient temperature above 85° F 29° C

\*50 Hz models shipped as 220/240 V 41.6/20.8A. Adjustable to 100-120V 50-41.7A, 200-240V 25-208A, 3 wire. Reconnectible 100-120 V 50-41A or 200-240 V 25-208 A, 2 wire.

## Weight, Size and Sound Level

- 230 lb
- Length: 25.31 in; Width: 21.06 in; Height: 14.62 in] (see installation dimensions inside)
- 60 Hz: 77 dB(A) @ 10 ft. (3 m); 63 dB(A) 50 ft before installation full load
- 50 Hz: 68 dB(A) @ 7 m (23 ft) before installation

Lower than National Park Service sound level requirements (60 dB(A) at 50 ft). Can be used in National Parks.  
\*Typical installation will further reduce sound level.

## Standard Features

- Vacu-Flo cooling system plus Thru Flow generator
- 3-point focalized mounting system with vibration isolators
- Drip controlling sheet steel base
- Shielded exhaust header
- 2-stage air cleaner with replaceable dry element
- Connector for remote start/stop
- Automotive type starter with automatic start disconnect circuit
- Fuel filter
- Electronic ignition
- Capped voltage regulator
- Mechanical governor adjustable from service side
- Automatic choke with vacuum pull off
- Electronic fuel pump (gasoline), electric solenoid (LPG)
- Positive fuel safety shutoff (3 psi)
- Spin-on, full-flow lube oil filter
- Low oil pressure shutdown
- 50-inch (1.3 m) generator output leads
- USDA Forest Service-approved spark arrestor muffler (available as an accessory)

## Engine Detail

**Model:** Onan Performer™ N60V gasoline engine  
**Design:** 4-Cycle, L-head, two cylinders horizontally opposed

**Compression Ratio:** 7 to 1

**Displacement:** 60 in<sup>3</sup> (938 cm<sup>3</sup>)

**Maximum Power at 60 Hz:**

- NHE (gasoline) - 14 bhp (10.4 kW);

- NHE (LPG) - 13.6 bhp (10.1 kW)

**Maximum Power at 50 Hz:**

- NHE: (gasoline) 11.2 bhp (8.4 kW)

**Cooling:** Vacu-Flo®

**Cooling Air Volume:** (includes generator cooling air for the Thru-Flow cooling system)

- 60 Hz - 480 ft<sup>3</sup>/min (13.4 m<sup>3</sup>/min);

- 50 Hz - 400 ft<sup>3</sup>/min (11.3 m<sup>3</sup>/min)

**Fuel System:** Combustion Air Volume

- 60 Hz: 25 ft<sup>3</sup>/min (0.7 m<sup>3</sup>/min)

- 50 Hz: 21 ft<sup>3</sup>/min (0.6 M<sup>3</sup>/min)

**NHE:** (gasoline) Sidedraft Carburetor

- Electronic fuel pump with positive fuel shutoff - (3 psi), fuel lift 3 ft (914 mm)

- Replaceable dry element air cleaner

- Automatic choke with vacuum pull-off

**NHE:** (LPG) Onan patented LP vaporizer with demand regulator

- Replaceable dry element air cleaner

**Average Fuel Consumption:**

**Gasoline**

	<u>No Load</u> gph/(l/h)	<u>Half Load</u> gph/(l/h)	<u>Full Load</u> gph/(l/h)
60 Hz	0.4 (1.6)	0.7 (2.5)	1.3 (4.9)
50 Hz	0.4 (1.6)	0.7 (2.5)	1.0 (3.8)

**LPG**

	<u>No Load</u> lb/h(kg/h)	<u>Half Load</u> lb/h(kg/h)	<u>Full Load</u> lb/h(kg/h)
60 Hz	2.6 (1.2)	4.5 (2.0)	7.3 (3.3)
50 Hz	2.2 (1.0)	3.4 (1.5)	5.1 (2.3)

**Ignition System:** Electronic 12 V, battery ignition with resistor plugs

**Starting System:** Remote, 12 V, 3-wire negative ground

- Automotive type starter with environmentally protected pinion

- Automatic start disconnect

- Connector for remote start cable

- Start-stop rocker switch on control

**Lubrication:** Full pressure system

Positive displacement lube oil pump

**Oil Capacity:** 3.5 qt (3.8 L) including filter

- Spin-on, full-flow lube oil filter

- Low oil pressure shutdown dipstick

**Cylinder-Crankcase:** Alloy aluminum with iron cylinder liners cast into the block

- Aluminum oil base

**Cylinder Head:** Alloy aluminum, removable

**Valves:** Austenitic steel alloy exhaust valves

- Replaceable intake and exhaust valve seats

- Positive rotators on exhaust valves

## Generator Detail

**Design:** Onan, 4-pole self-excited revolving field. Permanently aligned to engine by a tapered shaft. Drip-proof construction.

**Insulation System and Temperature Rise:**

Meets ANSI/RVIA EGS-1, BS-4999, and CSA 946 standards.

**Cooling:** Direct Drive Centrifugal Blower

Air Required (included in engine cooling air volume)

- 60 Hz: 90 ft<sup>3</sup>/min (2.5 m<sup>3</sup>/min)

- 50 Hz: 75 ft<sup>3</sup>/min (2.1 m<sup>3</sup>/min)

Cast aluminum housing for excellent heat transfer

**Exciter:** Electronic voltage regulator (capped at 126 V)

**Rotor:** Laminated electrical steel assembly press-fitted to shaft, balanced

- Heavy insulated copper wire windings

**Stator:** Laminated electrical steel assembly skewed for improved waveform

- Heavy insulated copper wire windings

**DC Brushes:** Electrographic; long life, easily serviced

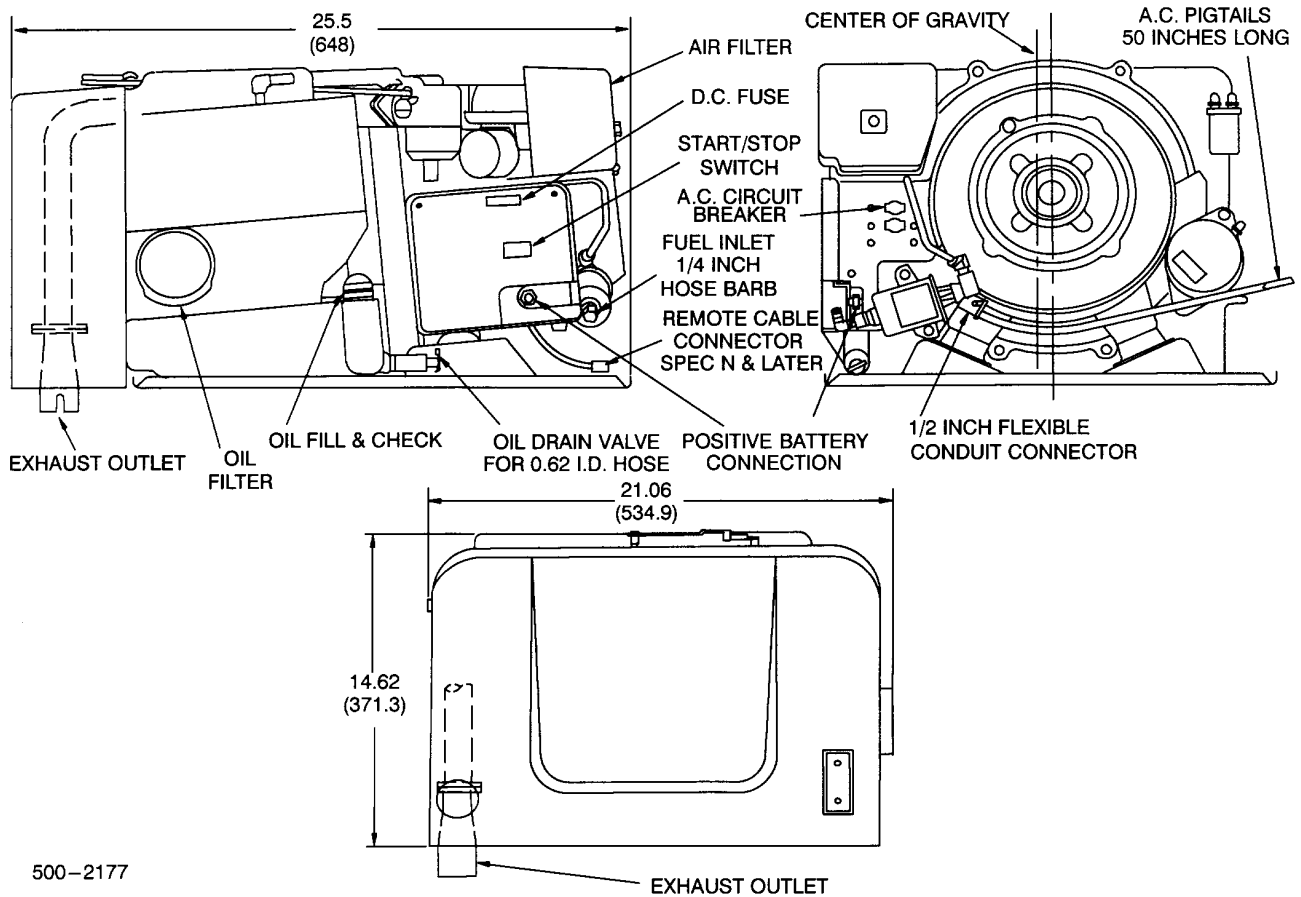
**Bearing:** Double-sealed, prelubricated ball bearing

## GenSet Performance

**Air Conditioner Starting:** (60 Hz -) two 13,500 Btu air conditioners with 3,000 W baseload at 100° F 38° C at 500 ft (152 m) elevation.

**Frequency and Voltage Regulation:** Better than requirements of ANSI/EGS-1.

## Basic Dimensions



### Approximate Dimensions

**Length:** 25 in (635 mm)  
**Width:** 18.8 in (478 mm)  
**Height:** 14.0 in (356 mm)  
**Weight:** 216 lb (98 kg)

**CAUTION:** Drawings are supplied for reference only and should not be used for installation. See Installation Manual for details.

## Options and Accessories

- Remote start/stop rocker switch (P/N 300-4936)
- Remote control with start/stop switch and running time meter (P/N 300-4937)
- Remote control with start/stop switch and DC voltmeter (P/N 300-4938)
- Remote control plug and wire harness (10 ft - P/N 338-3489-01, 30 ft - P/N 338-3489-02)
- Battery, 12 V, 360 cold cranking amps at 0° F (-18° C)
- Housing kit (P/N 405-3402) for underfloor installation
- Exhaust resonator (P/N 155-2449)
- 30 A circuit breaker (P/N 320-1572)
- Under set mounted exhaust, accessory kit (P/N 542-0471), left side outlet
- Under set mounted exhaust, accessory kit (P/N 542-0486), left side outlet with 2-inch extended tube and spacer
- Under set mounted exhaust, accessory kit (P/N 542-0472), right side outlet
- Under set mounted exhaust, accessory kit (P/N 542-0484), right side outlet with 2-inch extended tube and spacer
- Set mounted exhaust, accessory kit (P/N 542-0482), rear outlet
- Set mounted exhaust, accessory kit (P/N 542-0469), front outlet
- Set mounted exhaust, accessory kit (P/N 542-0470), side outlet

## Onan Testing for RV Application

Tested at extremes of temperature -20° F (-29° C) to 120° F (49° C) for starting and operation.  
Tested with RV loads, air conditioners, microwaves, converter, TVs, VCRs.  
Tested installed. Onan owns RVs used for product development testing.  
Tested in high humidity conditions.  
Tested in salt spray conditions.  
Tested in heavy airborne dust conditions.  
Field Test program.  
60 Hz (120V only) models listed by SGS United States Testing Company, Inc. per ANSI/EGS-1-1998 and CSA-certified per Electrical Bulletin 946.  
Ratings apply to altitudes up to 500 ft (150 m), 85° F (29° C) ambient with muffler, in RV enclosure.  
60 Hz models meet U.S. EPA Phase I and 1995-2001 California emission regulations for small off-road engines.



## Warranty Policy

The ONAN Limited Warranty covers virtually everything except routine maintenance for the first two years you own your RV generator set, and covers parts and labor on major power train and generator set parts during the third year. In addition, it also includes a free 90-day adjustment policy, which provides that Onan will make minor adjustments to your new genset during the first three months you own it - free of charge! Please note: The Onan 3-year Limited Warranty applies to RV generators used in RV applications only, and does not apply to RV generators used in commercial mobile applications.

For complete Onan Limited Warranty details see your Onan Distributor or Certified Onan Service Dealer.

## After Sale Support

### GENUINE ONAN MAINTENANCE CARE PARTS AND PRODUCTS

For your ongoing satisfaction and the dependability of your Onan RV genset, Onan offers a complete line of replacement and tune-up parts, oil and maintenance chemicals specifically designed for RV gensets. Easy to find at certified Onan RV Service and Parts Dealers coast-to-coast, Onan Green Label™ RV parts are packaged for correct selection and convenient on-board storage.

### EASY TO LOCATE CERTIFIED ONAN RV SERVICE AND PARTS DEALERS

Onan has trained, tested and certified over 1,000 Onan RV Service Dealers covering most major metropolitan areas in the U.S. and Canada. To easily locate the certified Onan Service Dealer, no matter where you travel, call 1-800-888-ONAN and ask us to send you an RV Service and Parts Dealer Directory (F-919).



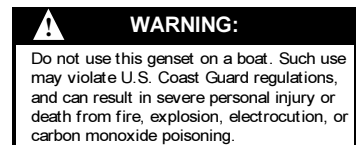
Onan Corporation 1400 73rd Avenue N.E. Minneapolis, MN 55432  
763.574.5000 • 1.800.888.ONAN • Fax 763.574.8289 • www.funroads.com



## See Your Onan Distributor:



Onan is a registered trademark of Onan Corporation.  
Printed in U.S.A.



**WARNING:** Backfeed to a utility system can cause electrocution and/or property damage. Do not connect to any building's electrical system except through an approved device or after building main switch is open.